



**Model ATP10K100M,
M1 through M6
Field Generator
3000 Watts CW
10 kHz-100MHz**

AR RF/Microwave Instrumentation’s Model ATP10K100M is a broadband, high power RF Field Generator. The unit is capable of generating intense fields in a large volume over a wide frequency range. The ATP10K100M is a balanced parallel conductor transmission line that is 2.4 meters long and 1.0 meter wide. It has been designed to match free space impedance of 377 ohms, which results in extremely efficient production of RF fields. Twin conductor transmission lines produce both E (electric) and H (magnetic) fields (see Figure 1). Matching transformer and load resistors are built in and provide excellent VSWR characteristics over a frequency range of 10 kHz to 100 MHz. To achieve maximum flexibility in use the ATP10K100M can be rotated and the height adjusted to accommodate the unit under test. The unit is also mounted on a stand equipped with casters for maximum mobility. Items small enough to fit between the elements can be placed on a pedestal or table and the ATP10K100M adjusted to surround them. For larger items, the height and angle of the radiating elements can be changed for maximum field strength.

SPECIFICATIONS

| | |
|--------------------------------|---|
| POWER INPUT, CW | 3000 watts maximum |
| FREQUENCY RANGE | 10 kHz – 100 MHz |
| INPUT IMPEDANCE | 50 ohms |
| VSWR | 2.0:1 max. 10kHz – 100 MHz 6:1 max. 10-20kHz above 1KW input power |
| ELECTRIC FIELD INTENSITY | See Figure 1 |
| RF INPUT CONNECTOR | See Model Configurations |
| COOLING..... | Natural convection to 40° ambient temperature |
| WEIGHT | 95 kg (210 lbs) |
| SIZE (WxHxD)..... | 265 cm x 240 cm x 120 cm (105 x 96 x 49 in) |

MODEL CONFIGURATIONS

| Model Number | RF Input Connector Type | Description |
|--------------|---|---|
| ATP10K100M | C(f) (plus N(f) quick change connector) | Supplied with basic stand. |
| ATP10K100MM1 | 7-16 DIN female | Supplied without stand. See individual specification sheet. |
| ATP10K100MM2 | 7-16 DIN female | Supplied with basic stand. See individual specification sheet. |
| ATP10K100MM3 | C(f) (plus N(f) quick change connector) | Supplied with 3-axis stand. See individual specification sheet. |
| ATP10K100MM4 | 7-16 DIN female | Supplied with 3-axis stand. See individual specification sheet. |
| ATP10K100MM5 | C(f) (plus N(f) quick change connector) | Modified stand for smaller chamber doors. See individual specification sheet. |
| ATP10K100MM6 | 7/8 EIA swivel | Supplied with 3-axis stand. See individual specification sheet. |

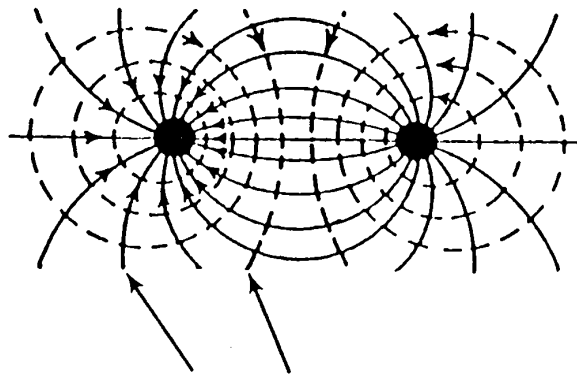


Fig. 1 E and H Field Pattern

